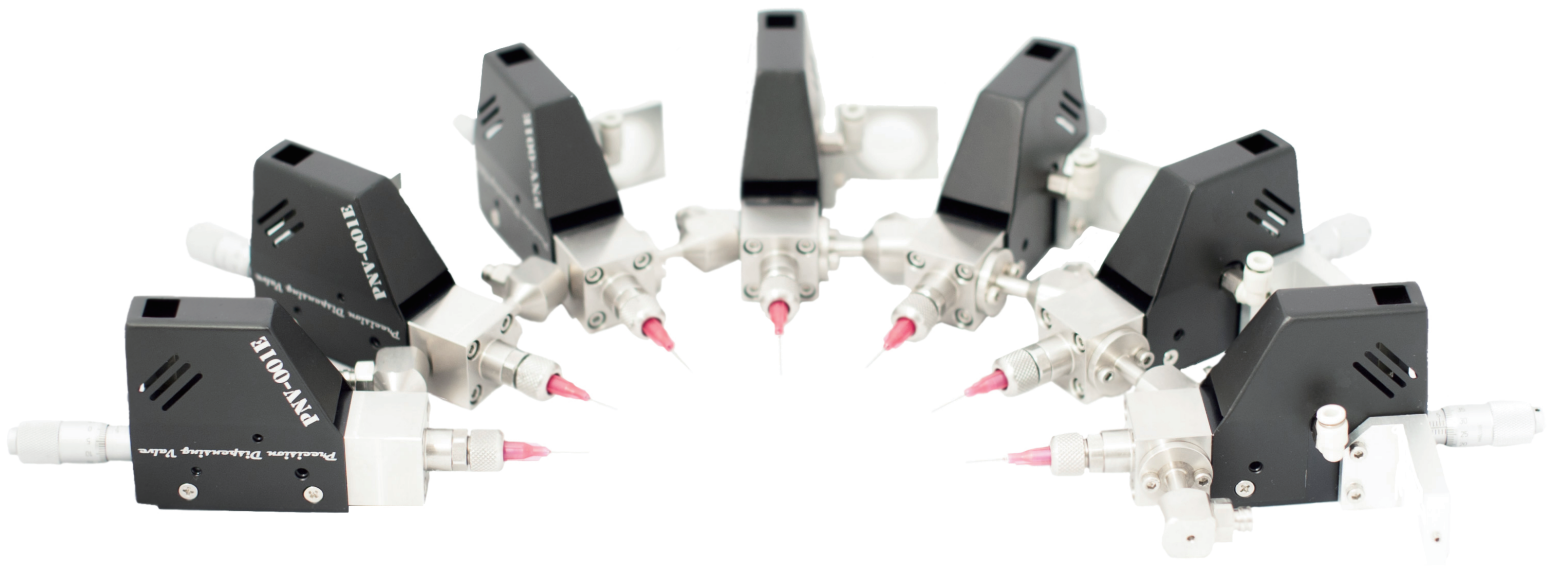


Precision Needle Valve **PNV - 001** SERIES



※ 특허 출원 중 (제 10-2014-0151952호)

High
dispensing accuracy
and
repeatability
with
process variation

Continuous dots
for line
can be created
due to high-acting
actuator

Capability
of
small and continuous
dot size
due to high-speed
of valve actuating

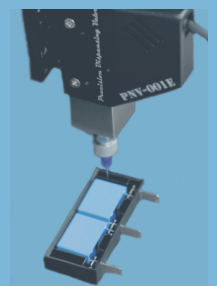
Convenient
control
of
valve stroke
by micro-meter

No controller
needed
for operation
(Valve only)

Features

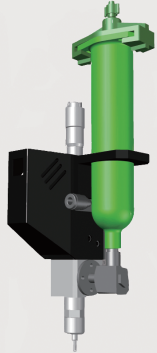
- Capability of high-speed cycle
(cycle rate is max. 80 Hz)
- Actuating speed of min. 1.5 ms
(Max. actuating speed is Continuous dispensing ON)
- Performance of high-acting miniature solenoid
 - Valve only & Low-profile
- Compact design & Low weight for easy integration

- 고속 성능 (최대 80Hz)
- 1.5ms 의 빠른 응답성 (ON 유지 시, 연속토출)
- 소형 Solenoid 의 높은 성능
- 전용 Controller가 불 필요한 단독 장치
- 소형화 & 경량 설계 및 쉬운 결합



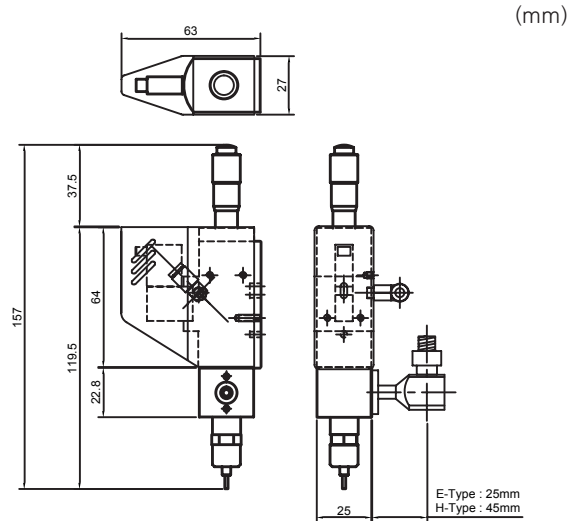
Precision Needle Valve **PNV - 001** SERIES

Specifications

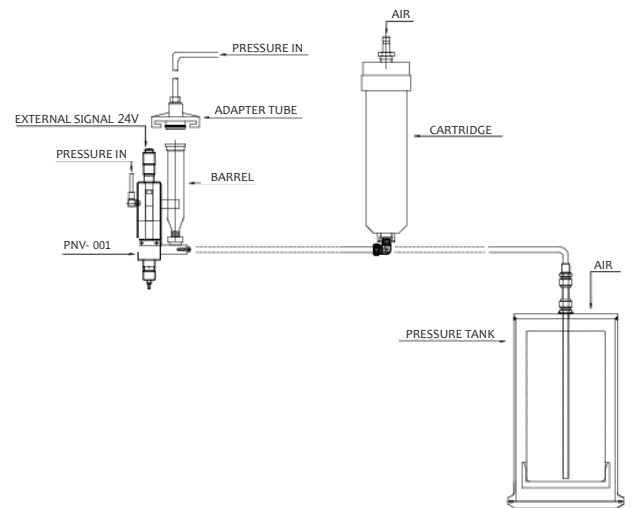


Electrical input	24 VDC, 4 Watts
Air input	4 ~ 6 Bar
Min. actuation time	1.5 milliseconds
Max. actuation time	Continuous ON
Operating frequency	Max. 80 Hz
Operating scope	Valve only
Material	Housing : Anodized AL
	Tappet : SUS304
	O-ring : Teflon / EPDM
	Weight : Approx. 390g

► Dimensions



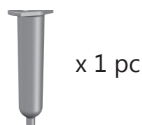
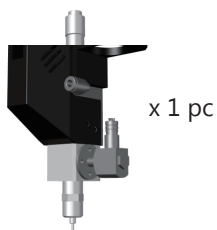
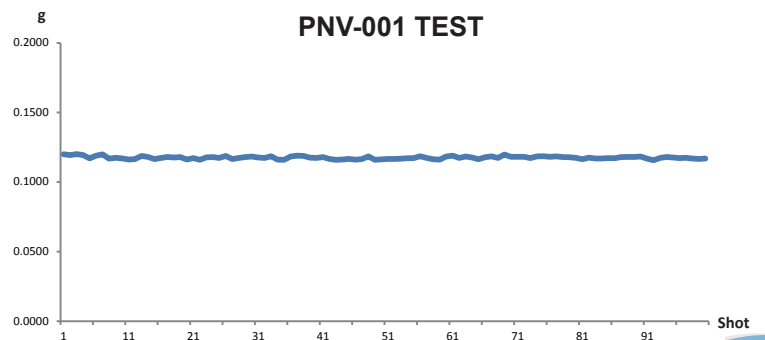
► Schematic Diagram



► Dispensing Test

※ Test condition

- Material : water
- Syringe air : 100 kPa
- Valve air : 500 kPa
- Needle : 27G (0.2mm/0.41mm)



Supply
scope